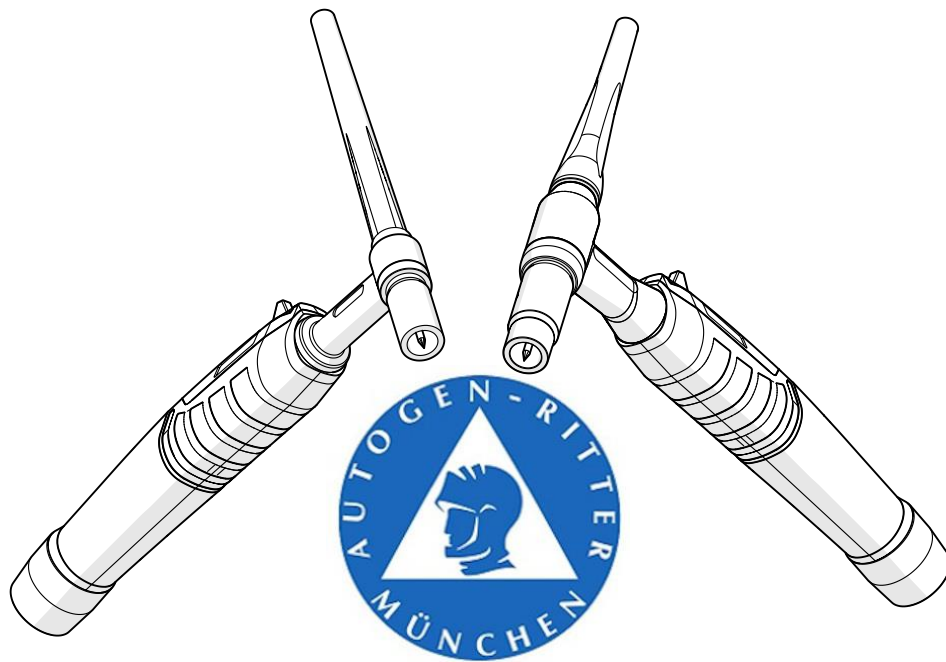




TIG-Manual Welding Torches e.ARC





Contents

Order information for TIG e.ARC torches

Technical data e.ARC TIG Torches	3
--	---

Overview and configurator for TIG e.ARC torches

Overview torch connections for air cooled e.ARC TIG Torches	4
Configurator air cooled e.ARC TIG Torches	5
Overview torch connections for water cooled e.ARC TIG Torches	6
Configurator water cooled e.ARC TIG Torches	7

Spare parts for TIG e.ARC torches

Spare parts e.ARC 18W-F / 26G-F	8
Spare parts e.ARC 18W-F / 26G-F (Conversionkit)	10
Spare parts e.ARC 9G-F / 20W-F	12

Order information for TIG e.ARC torch bodies and handle

Overview Torch Body e.ARC	14
Overview handle e.ARC	14

Order information cable hose packages for TIG e.ARC torches

Cable hose package e.ARC 9G-F	15
Cable hose package e.ARC 26G-F	16
Torch connections for power sources e.ARC 9G-F/26G-F	17
Cable hose package e.ARC 20W-F	19
Cable hose package e.ARC 18W-F	20
Torch connections for power sources e.ARC 20W-F/18W-F	21

Accessories

Tungsten electrodes	23
---------------------------	----



Technical data e.ARC TIG Torches

e.ARC 18W-F



Technical Data according to EN 60 974-7
Rating: 400 A DC
280 A AC
Duty cycle: 60 %
Tungsten electrodes-Ø: 1,6 – 4,0 mm

e.ARC 26G-F



Technical Data according to EN 60 974-7
Rating: 220 A DC
155 A AC
Duty cycle: 35 %
Tungsten electrodes-Ø: 1,6 – 4,0 mm

e.ARC 20W-F



Technical Data according to EN 60 974-7
Rating: 270 A DC
190 A AC
Duty cycle: 60 %
Tungsten electrodes-Ø: 0,5 – 3,2 mm


e.ARC 9G-F




Technical Data according to EN 60 974-7
Rating: 140 A DC
100 A AC
Duty cycle: 35 %
Tungsten electrodes-Ø: 0,5 – 3,2 mm



Overview torch connections for air cooled e.Arc TIG Torches

Single connection	M12x1	
	G1/4" *	
	G3/8" *	

BSB-connection	BSB 10/25 (Ø9mm) Gas: 1/4"	
	BSB 35/50 (Ø13mm) Gas: 1/4"	

Compact connection TIG gas central



Euro-GZ0



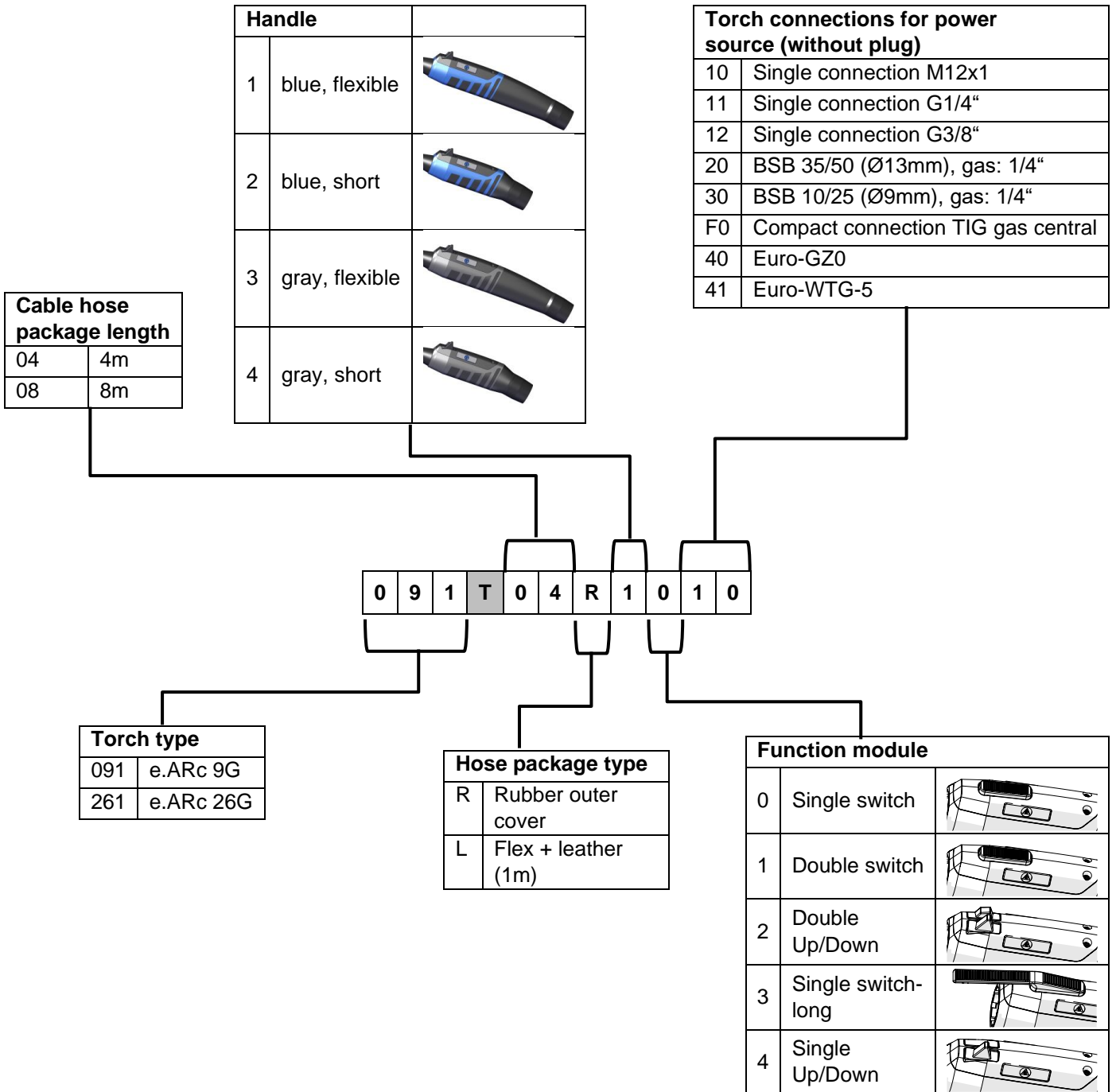
Euro-WTG-5



*with adaptor



Configurator air cooled e.ARC TIG Torches



Note:
All TIG-Welding Torches are equipped with Spare parts (Ø2,4mm) and without plug for control cable. Other torch connections and length on request.



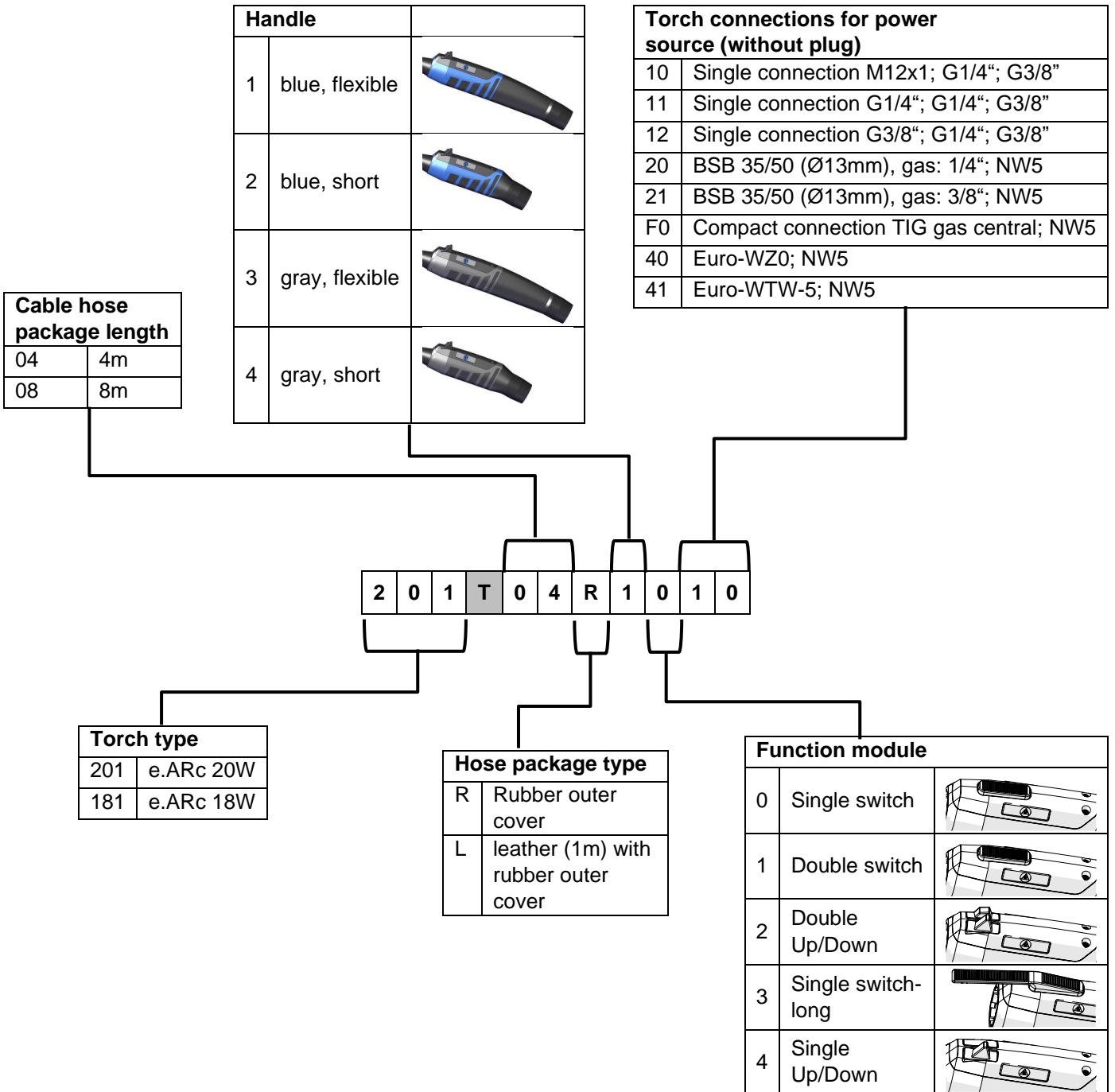
Overview torch connections for water cooled e.Arc TIG Torches

Single connection	<p>M12x1</p> <p>G1/4" *</p> <p>G3/8" *</p>		<p>gas: G1/4"</p> <p>water: G3/8"</p>
BSB-connection	<p>BSB 35/50 (Ø13mm) Gas: 1/4"</p> <p>BSB 35/50 (Ø13mm) Gas: 3/8"</p>		<p>water: water hosenipple NW5</p>
Compact connection TIG gas central			<p>water: water hosenipple NW5</p>
Euro-WZ0			<p>water: water hosenipple NW5</p>
Euro-WTW-5			<p>water: water hosenipple NW5</p>

*with adaptor



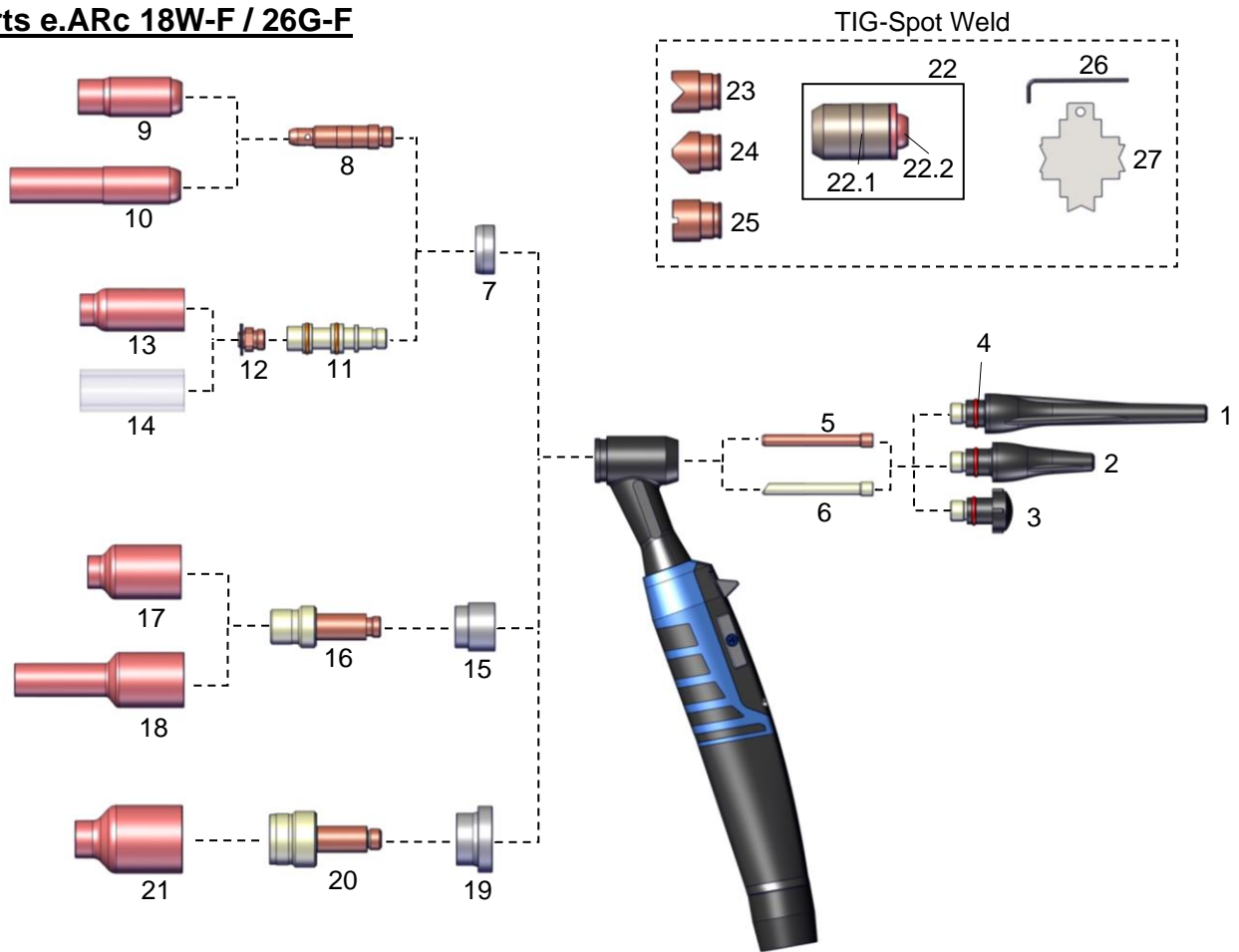
Configurator water cooled e.Arc TIG Torches



Note:
All TIG-Welding Torches are equipped with Spare parts (Ø2,4mm) and without plug for control cable. Other torch connections and length on request.



Spare parts e.ARC 18W-F / 26G-F



Spare Part List

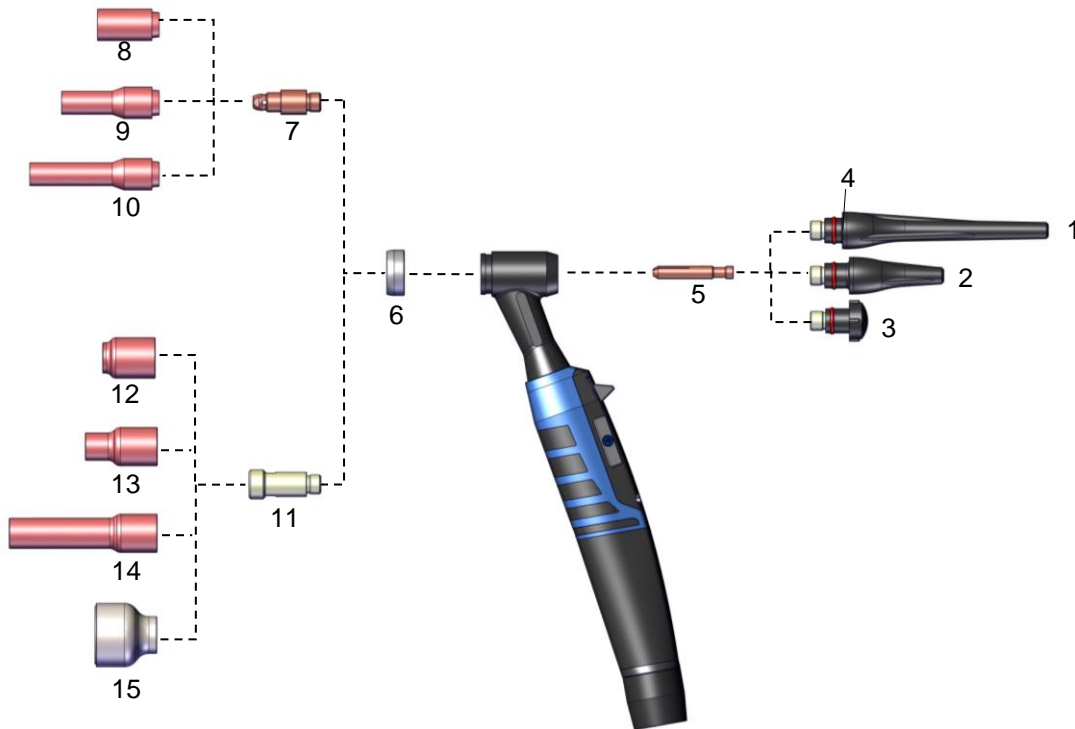
Pos.	Part No.	Description	Pos.	Part No.	Description
1	1170301	Back Cap, long (PU=5)	8	1180632	Collet Body Ø3,2, l=47mm (PU=5)
2	1170403	Back Cap, medium (PU=5)		1180640	Collet Body Ø4,0, l=47mm (PU=5)
3	1170401	Back Cap, short (PU=5)	9	1170704	Ceramic Nozzle Size 4, Ø6,5, l=47mm (PU=10)
4	0092001	O-Ring for Back Cap (PU=20)		1170705	Ceramic Nozzle Size 5, Ø8,0, l=47mm (PU=10)
5	11704XX	Collet, l=50mm (PU=5)		1170706	Ceramic Nozzle Size 6, Ø9,5, l=47mm (PU=10)
		<i>Collets are available in ø 1.0/1.6/2.4/3.2/4.0 mm</i>		1170707	Ceramic Nozzle Size 7, Ø11,0, l=47mm (PU=10)
		<i>Please insert XX for electrode diameter.</i>		1170708	Ceramic Nozzle Size 8, Ø12,5, l=47mm (PU=10)
		<i>Example: ø 1.0 mm is: 10; Part-No.: = 1170410</i>		1170710	Ceramic Nozzle Size 10, Ø16,0, l=47mm (PU=10)
6	13504XX	Collet Long Life, l=50mm (PU=5)		1170712	Ceramic Nozzle Size 12, Ø19,0, l=47mm (PU=10)
		<i>Collets are available in ø 1.0/1.6/2.4/3.2/4.0 mm</i>	10	10N50L	Ceramic Nozzle Size 4, Ø6,5, l=76mm (PU=10)
		<i>Please insert XX for electrode diameter.</i>		10N49L	Ceramic Nozzle Size 5, Ø8,0, l=76mm (PU=10)
		<i>Example: ø 1.0 mm is: 10; Part-No.: = 1350410</i>		10N48L	Ceramic Nozzle Size, Ø9,5, l=76mm (PU=10)
7	14022061	Insulator (PU=5)		10N47L	Ceramic Nozzle Size 7, Ø11,0, l=76mm (PU=10)
8	1180610	Collet Body Ø1,0, l=47mm (PU=5)		10N46L	Ceramic Nozzle Size 8, Ø12,5, l=76mm (PU=10)
	1180616	Collet Body Ø1,6, l=47mm (PU=5)			
	1180624	Collet Body Ø2,4, l=47mm (PU=5)			



Pos.	Part No.	Description	Pos.	Part No.	Description
11	1350620	Collet Body, l=45mm	19	1402216	Insulator (PU=5)
12	13523XX	Adapter, l=12mm	20	45V0204	Big Gas Lens Ø1,0mm, l=50mm
<i>Adapter for Collet Body are available in ø 1.0/1.6/2.4/3.2/4.0 mm. Please insert XX for electrode diameter. Example: ø 1.0 mm is: 10; Part-No.: = 1352310</i>				45V116	Big Gas Lens Ø1,6mm, l=50mm
13	1351704	Ceramic Nozzle Size 4, Ø6,5, l=47mm		45V64	Big Gas Lens Ø2,4mm, l=50mm
	1351705	Ceramic Nozzle Size 5, Ø8,0, l=47mm		995795	Big Gas Lens Ø3,2mm, l=50mm
	1351706	Ceramic Nozzle Size 6, Ø9,5, l=47mm		45V63	Big Gas Lens Ø4,0mm, l=50mm
	1351707	Ceramic Nozzle Size 7, Ø11,0, l=47mm	21	53N88	Ceramic Nozzle Size 10 for Big Gas Lens, Ø16,0, l=48mm (PU=10)
	1351708	Ceramic Nozzle Size 8, Ø12,5, l=47mm		53N87	Ceramic Nozzle Size 12 for Big Gas Lens, Ø19,5, l=48mm (PU=10)
14	1350720	Glas-Nozzle, Ø14,0, l=47mm		53N89	Ceramic Nozzle Size 16 for Big Gas Lens, Ø25,5, l=48mm (PU=10)
15	14022121	Insulator (PU=5)	22	15611110	Nozzle holder Spot Weld cpl.
16	11826XX	Collet Body with Gas Lens, l=50mm (PU=5)	22.1	15611111	Adaptar body
<i>Collet Body with Gas Lens available in ø 1.0/1.6/2.4/3.2/4.0 mm. Please insert XX for electrode diameter. Example: ø 2,4 mm is: 10; Part-No.: = 1182624</i>			22.2	15611101	Insulator
17	1210704	Ceramic Nozzle Size 4 for Gas Lens, Ø6,5, l=42mm (PU=10)	23	15611011	Outside corner tip
	1210705	Ceramic Nozzle Size 5 for Gas Lens, Ø8,0, l=42mm (PU=10)	24	15611021	Inside corner tip
	1210706	Ceramic Nozzle Size 6 for Gas Lens, Ø9,5, l=42mm (PU=10)	25	15611031	Flat tip
	1210707	Ceramic Nozzle Size 7 for Gas Lens, Ø11,0, l=42mm (PU=10)	26	15611000	Allen key
	1210708	Ceramic Nozzle Size 8 for Gas Lens Ø12,5, l=42mm (PU=10)	27	1561120	Gauge
	1210712	Ceramic Nozzle Size 12 for Gas Lens Ø19,0, l=42mm (PU=10)	no fig.	1560003	TIG-Spot Weld Conversion kit, consists of: 1x Nozzle holder Spot Weld cpl. 1x Outside corner tip 1x Inside corner tip 1x Flat tip 1x Allen key 1x Gauge
18	54N18L	Ceramic Nozzle Size 4 for Gas Lens, Ø6,5, l=76mm (PU=10)			
	54N17L	Ceramic Nozzle Size 5 for Gas Lens, Ø8,0, l=76mm (PU=10)			
	54N16L	Ceramic Nozzle Size 6 for Gas Lens, Ø9,5, l=76mm (PU=10)			
	54N15L	Ceramic Nozzle Size 7 for Gas Lens, Ø11,0, l=76mm (PU=10)			
	54N14L	Ceramic Nozzle Size 8 for Gas Lens, Ø12,5, l=76mm (PU=10)			



Spare parts e.ARC 18W-F / 26G-F (Conversionkit)



Spare Part List

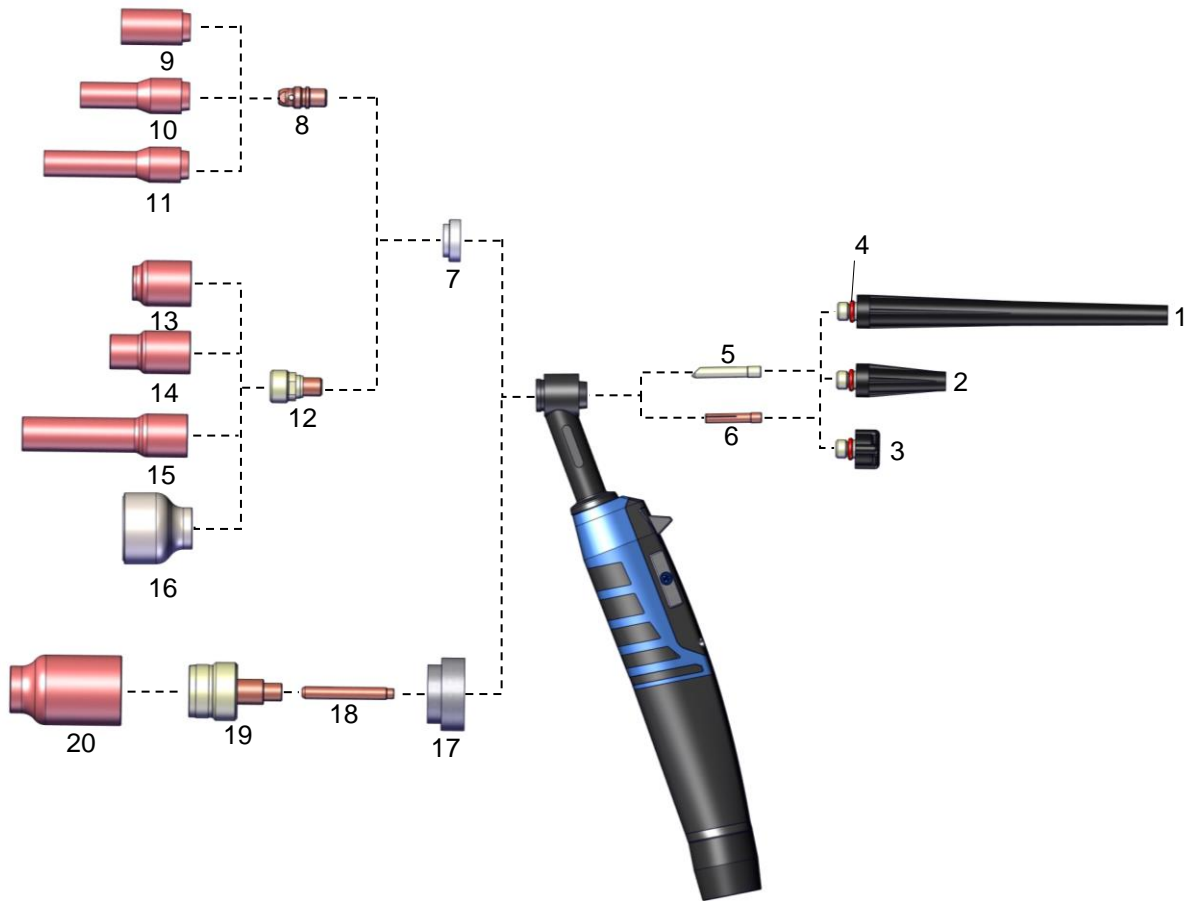
Pos.	Part No.	Description	Pos.	Part No.	Description
1	1170301	Back Cap, long (PU=5)	9	796F70	Ceramic Nozzle Size 3 Ø5,0, l=48mm (PU=10)
2	1170403	Back Cap, medium (PU=5)		796F71	Ceramic Nozzle Size 4 Ø6,5, l=48mm (PU=10)
3	1170401	Back Cap, short (PU=5)		796F72	Ceramic Nozzle Size 5 Ø8,0, l=48mm (PU=10)
4	0092001	O-Ring for Back Cap (PU=20)		796F73	Ceramic Nozzle Size 6 Ø9,5, l=48mm (PU=10)
5	14014XX	Collet, l=40mm, e.ARC (PU=5)	10	796F74	Ceramic Nozzle Size 3 Ø5,0, l=63mm (PU=10)
		<i>Collets are available in ø 1.6/2.4/3.2 mm</i>		796F75	Ceramic Nozzle Size 4 Ø6,5, l=63mm (PU=10)
		<i>Please insert XX for electrode diameter.</i>		796F76	Ceramic Nozzle Size 5 Ø8,0, l=63mm (PU=10)
		<i>Example: ø 1.6 mm is: 16; Part-No.: = 1401416</i>		796F77	Ceramic Nozzle Size 6 Ø9,5, l=63mm (PU=10)
6	14022011	Insulator e.ARC (PU=5)	11	14023XX	Collet Body with Gas Lens, l=35mm, e.ARC (PU=5)
7	14016XX	Collet Body, l=33mm, e.ARC (PU=5)			<i>Collet Body with Gas Lens available in ø 1.6/2.4/3.2 mm.</i>
		<i>Collet Body available in ø 1.6/2.4/3.2 mm</i>			<i>Please insert XX for electrode diameter.</i>
		<i>Please insert XX for electrode diameter.</i>			<i>Example: ø 2,4 mm is: 10; Part-No.: = 1402324</i>
		<i>Example: ø 2.4 mm is: 24; Part-No.: = 1401624</i>	12	1202404	Ceramic Nozzle Size 4 for Gas Lens, Ø6,5, l=25mm (PU=10)
8	1200704	Ceramic Nozzle Size 4 Ø6,5, l=29mm (PU=10)		1202405	Ceramic Nozzle Size 5 for Gas Lens, Ø8,0, l=25mm (PU=10)
	1200705	Ceramic Nozzle Size 5 Ø8,0, l=29mm (PU=10)		1202406	Ceramic Nozzle Size 6 for Gas Lens, Ø9,5, l=25mm (PU=10)
	1200706	Ceramic Nozzle Size 6 Ø9,5, l=29mm (PU=10)		1202407	Ceramic Nozzle Size 7 for Gas Lens, Ø11,0, l=25mm (PU=10)
	1200707	Ceramic Nozzle Size 7 Ø11,0, l=29mm (PU=10)		1202408	Ceramic Nozzle Size 8 for Gas Lens, Ø12,5, l=25mm (PU=10)
	1200708	Ceramic Nozzle Size 8 Ø12,5, l=29mm (PU=10)			
	1200710	Ceramic Nozzle Size 10 Ø16,0, l=42mm (PU=10)			



Pos.	Part No.	Description	Pos.	Part No.	Description
13	53N58L	Ceramic Nozzle Size 4 for Gas Lens, Ø6,5, l=35mm (PU=10)	15	99400028	Nozzle cpl. TIG-Lens Cover Ø1,6, l=28mm
	53N59L	Ceramic Nozzle Size 5 for Gas Lens, Ø8,0, l=35mm (PU=10)		99400029	Nozzle cpl. TIG-Lens Cover Ø2,4, l=28mm
	53N60L	Ceramic Nozzle Size 6 for Gas Lens, Ø9,5, l=35mm (PU=10)		99400030	Nozzle cpl. TIG-Lens Cover Ø3,2, l=28mm
	53N61L	Ceramic Nozzle Size 7 for Gas Lens, Ø11,0, l=35mm (PU=10)			
14	53N58XL	Ceramic Nozzle Size 4 for Gas Lens, Ø6,5, l=72mm (PU=10)			
	53N59XL	Ceramic Nozzle Size 5 for Gas Lens, Ø8,0, l=72mm (PU=10)			
	53N61XL	Ceramic Nozzle Size 7 for Gas Lens, Ø11,0, l=72mm (PU=10)			



Spare parts e.ARC 9G-F / 20W-F



Spare Part List

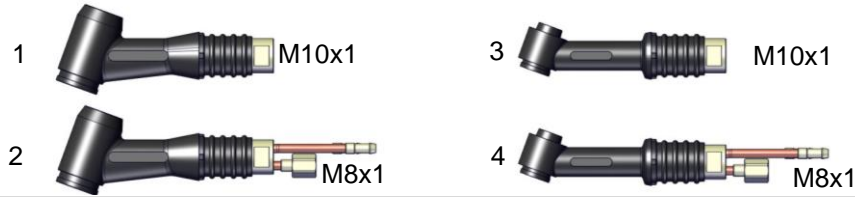
Pos.	Part No.	Description	Pos.	Part No.	Description
1	1090210	Back Cap, long (PU=5)	9	1200704	Ceramic Nozzle Size 4, Ø6,5, l=30mm (PU=10)
2	1090211	Back Cap, medium (PU=5)		1200705	Ceramic Nozzle Size 5, Ø8,0, l=30mm (PU=10)
3	1090212	Back Cap, short (PU=5)		1200706	Ceramic Nozzle Size 6, Ø9,5, l=30mm (PU=10)
4	0042000	O-Ring for Back Cap (PU=20)		1200707	Ceramic Nozzle Size 7, Ø11,0, l=30mm (PU=10)
5	14504XX	Collet Long Life, l=25mm (PU=5)		1200708	Ceramic Nozzle Size 8, Ø12,5, l=30mm (PU=10)
		<i>Collets are available in ø 1.0/1.6/2.4/3.2/4.0 mm Please insert XX for electrode diameter. Example: ø 1.0 mm is: 10; Part-No.: = 1450410</i>		1200710	Ceramic Nozzle Size 10, Ø16,0, l=30mm (PU=10)
6	12005XX	Collet, l=25mm (PU=5)	10	796F70	Ceramic Nozzle Size 3 Ø5,0, l=48mm (PU=10)
		<i>Collets are available in ø 1.0/1.6/2.4/3.2/4.0 mm Please insert XX for electrode diameter. Example: ø 1.0 mm is: 10; Part-No.: = 1200510</i>		796F71	Ceramic Nozzle Size 4 Ø6,5, l=48mm (PU=10)
7	1202200	Insulator (PU=5)		796F72	Ceramic Nozzle Size 5 Ø8,0, l=48mm (PU=10)
8	12016XX	Collet Body, l=20,5mm (PU=5)		796F73	Ceramic Nozzle Size 6 Ø9,5, l=48mm (PU=10)
		<i>Collet Body available in ø 1.0/1.6/2.4/3.2/4.0 mm Please insert XX for wire diameter. Example: ø 2.4 mm is: 24; Part-No.: = 1201624</i>			



Pos.	Part No.	Description	Pos.	Part No.	Description
11	796F74	Ceramic Nozzle Size 3 Ø5,0, l=63mm (PU=10)	16	99400028	TIG-Lens Cover Ø1,6, l=28mm
	796F75	Ceramic Nozzle Size 4 Ø6,5, l=63mm (PU=10)		99400029	TIG-Lens Cover Ø2,4, l=28mm
	796F76	Ceramic Nozzle Size 5 Ø8,0, l=63mm (PU=10)		99400030	TIG-Lens Cover Ø3,2, l=28mm
	796F77	Ceramic Nozzle Size 6 Ø9,5, l=63mm (PU=10)	17	54N63-20	Insulator (PU=5)
12	12023XX	Collet Body with Gas Lens, l=22,5mm (PU=5)	18	13N21L	Collet Ø1,0, for BIG Gas Lens, l=40mm (PU=5)
	<i>Collet Body with Gas Lens available in ø 1.0/1.6/2.4/3.2/4.0 mm. Please insert XX for electrode diameter. Example: ø 2,4 mm is: 10; Part-No.: = 1202324</i>			13N22L	Collet Ø1,6, for BIG Gas Lens, l=40mm (PU=5)
13	1202404	Ceramic Nozzle Size 4 Ø6,5, l=25mm (PU=10)		13N23L	Collet Ø2,4, for BIG Gas Lens, l=40mm (PU=5)
	1202405	Ceramic Nozzle Size 5 Ø8,0, l=25mm (PU=10)		13N24L	Collet Ø3,2, for BIG Gas Lens, l=40mm (PU=5)
	1202406	Ceramic Nozzle Size 6 Ø9,5, l=25mm (PU=10)	19	45V0204S	Big Gas Lens Ø1,0mm, l=40mm
	1202407	Ceramic Nozzle Size 7, Ø11,0, l=25mm (PU=10)		45V116S	Big Gas Lens Ø1,6mm, l=40mm
	1202408	Ceramic Nozzle Size 8, Ø12,5, l=25mm (PU=10)		45V64S	Big Gas Lens Ø2,4mm, l=40mm
14	53N58L	Ceramic Nozzle Size 4 Ø6,5, l=35mm (PU=10)		995795S	Big Gas Lens Ø3,2mm, l=40mm
	53N59L	Ceramic Nozzle Size 5 Ø8,0, l=35mm (PU=10)	20	57N75	Ceramic Nozzle Size 6 for Big Gas Lens, Ø9,5, l=48mm (PU=10)
	53N60L	Ceramic Nozzle Size 6 Ø9,5, l=35mm (PU=10)		57N74	Ceramic Nozzle Size 8 for Big Gas Lens, Ø12,5, l=48mm (PU=10)
	53N61L	Ceramic Nozzle Size 7, Ø11,0, l=35mm (PU=10)		53N88	Ceramic Nozzle Size 10 for Big Gas Lens, Ø16,0, l=48mm (PU=10)
15	53N58XL	Ceramic Nozzle Size 4 Ø6,5, l=72mm (PU=10)		53N87	Ceramic Nozzle Size 12 for Big Gas Lens, Ø19,5, l=48mm (PU=10)
	53N59XL	Ceramic Nozzle Size 5 Ø8,0, l=72mm (PU=10)		53N89	Ceramic Nozzle Size 15 for Big Gas Lens, Ø25,5, l=48mm (PU=10)
	53N61XL	Ceramic Nozzle Size 7, Ø11,0, l=72mm (PU=10)			



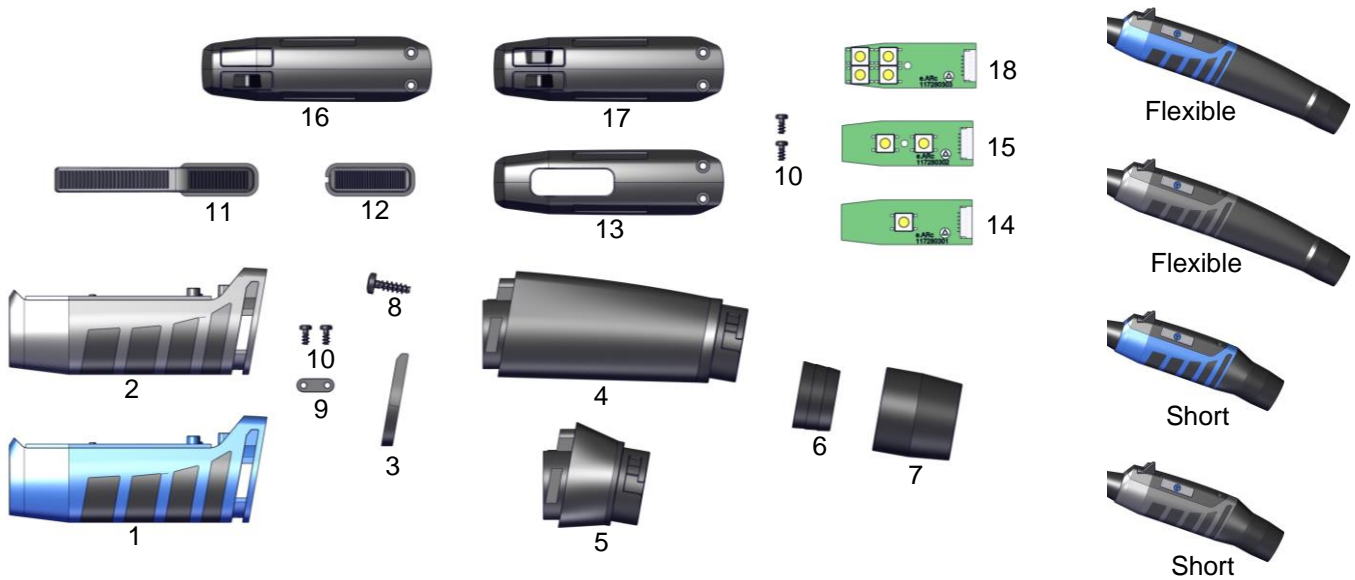
Overview Torch Body e.ARC



Spare Part List

Pos.	Part No.	Description	Pos.	Part No.	Description
1	1261T100	Torch body e.ARC 26G-F	3	1091T100	Torch body e.ARC 9G-F
2	1181T100	Torch body e.ARC 18W-F	4	1201T100	Torch body e.ARC 20W-F

Overview handle e.ARC

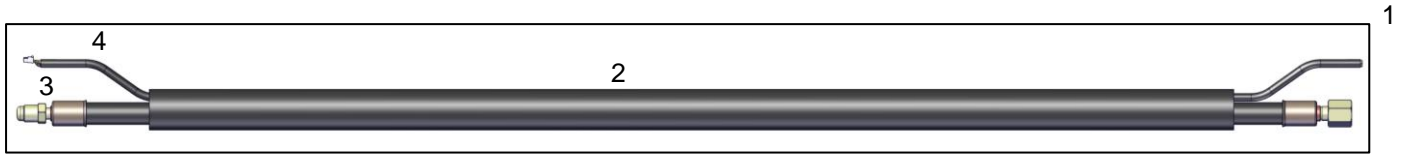


Spare Part List

Pos.	Part No.	Description	Pos.	Part No.	Description
1	117280101	Handle e.ARC blue	10	002205K	Screw Torx (PU=20)
2	117280102	Handle e.ARC gray	11	117280231	Extended Trigger for single switch, black
3	117280111	Clamp fo rhandle e.ARC	12	117280230	Trigger for single switch, black
4	117280110	Flexible kink protection e.ARC	13	117280201	Cover for single/double switch, black
5	117280115	Short kink protection e.ARC	14	117280301	Single Switch PCB
6	117280112	Clamping ring for cover hose e.ARC	15	117280302	Double Switch PCB
7	117280113	Nut for kink protection e.ARC	16	117280100SET05	Cover for single lever cpl., black
8	003512K	Screw Torx (PU=20)	17	117280100SET06	Cover for Up/Down cpl., black
9	117280114	Strain relief e.ARC	18	117280303	Up/Down PCB

Cable hose package e.ARc 9G-F

Standard cable hose package



Spare Part List

Pos.	Part No.	Description	Pos.	Part No.	Description
1	091T04002	Cable hose package standard 4m cpl.	3	091T41041	Current gas cable standard 4m cpl.
	091T08002	Cable hose package standard 8m cpl.		091T41081	Current gas cable standard 8m cpl.
2	92572124	Rubber outer cover 21x1,5 (PU=60m)	4	0510614-046	Control cable 6 pol., one side with flat connector, l=4,6m
				0510614-086	Control cable 6 pol., one side with flat connector, l=8,6m

Flex cable hose package with leather



Spare Part List

Pos.	Part No.	Description	Pos.	Part No.	Description
1	091T04002L	Flex cable hose package with leather (1m), 4m cpl.	3	091T41041F	Current gas cable flex standard 4m cpl.
	091T08002L	Flex cable hose package with leather (1m), 8m cpl.		091T41081F	Current gas cable flex standard 8m cpl.
2	92572124	Rubber outer cover 21x1,5 (PU=60m)	4	0510614-046	Control cable 6 pol., one side with flat connector, l=4,6m
2.1	1172651	Leather/rubber connector		0510614-086	Control cable 6 pol., one side with flat connector, l=8,6m
2.2	ARLS-23100	Leather l=1m			



Cable hose package e.ARc 26G-F

Standard cable hose package



Spare Part List

Pos.	Part No.	Description	Pos.	Part No.	Description
1	261T04002	Cable hose package standard 4m cpl.	3	261T41041	Current gas cable standard 4m cpl.
	261T08002	Cable hose package standard 8m cpl.		261T41081	Current gas cable standard 8m cpl.
2	92572124	Rubber outer cover 21x1,5 (PU=60m)	4	0510614-046	Control cable 6 pol., one side with flat connector, l=4,6m
				0510614-086	Control cable 6 pol., one side with flat connector, l=8,6m

Flex cable hose package with leather

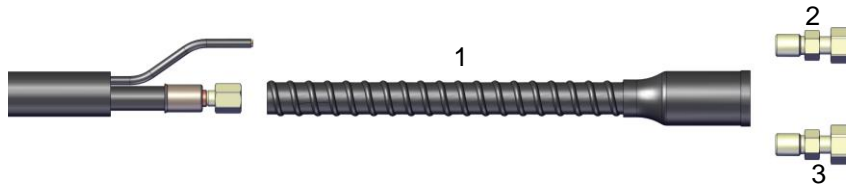


Spare Part List

Pos.	Part No.	Description	Pos.	Part No.	Description
1	261T04002L	Flex cable hose package with leather (1m), 4m cpl.	3	261T41041F	Current gas cable flex standard 4m cpl.
	261T08002L	Flex cable hose package with leather (1m), 8m cpl.		261T41081F	Current gas cable flex standard 8m cpl.
2	92572124	Rubber outer cover 21x1,5 (PU=60m)	4	0510614-046	Control cable 6 pol., one side with flat connector, l=4,6m
2.1	1172651	Leather/rubber connector		0510614-086	Control cable 6 pol., one side with flat connector, l=8,6m
2.2	ARLS-23100	Leather l=1m			

Torch connections for power sources e.Arc 9G-F/26G-F

Single connection M12x1 / G1/4" / G3/8"



Spare Part List

Pos.	Part No.	Description	Pos.	Part No.	Description
1	0331025	Kink protection	3	0331017	Adaptor M12x1 AG – G3/8" IG
2	0331016	Adaptor M12x1 AG – G1/4" IG			

BSB 10/25 (Ø9mm) with gas 1/4" - BSB 35/50 (Ø13mm) with gas 1/4"

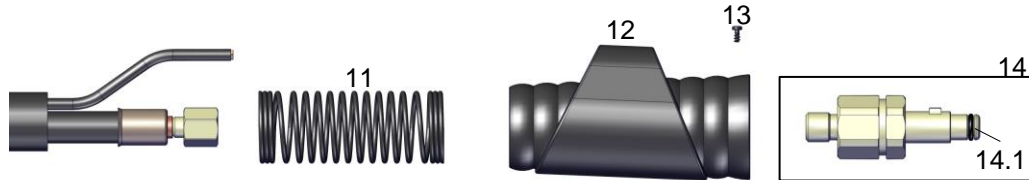


Spare Part List

Pos.	Part No.	Description	Pos.	Part No.	Description
1	0331025	Kink protection	8	45573158	Gas hose 5x2 black (PU=100m)
5	3595110S1	BSB plug SK35/50 (Ø13mm)	9	0313001	Nut G1/4"
6	3595010	BSB plug SK10/25 (Ø9mm)	10	0311004	Connector G1/4"
7	03211001	Single ear clamp D=10,0 (PU=100)			

Torch connections for power sources e.Arc 9G-F/26G-F

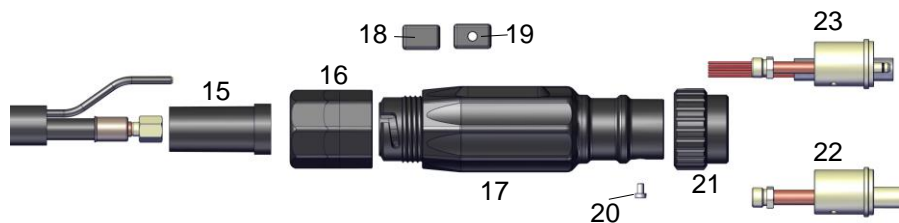
Compact connection TIG gas central



Spare Part List

Pos.	Part No.	Description	Pos.	Part No.	Description
11	300022731	Spring for housing	14	30002264	Compact connector TIG gas central
12	30002273	Housing for compact connection TIG gas central	14.1	0072000	O-Ring 7x2mm (PU=20)
13	300022735	Screw Torx (PU=20)			

Euro-GZ0 - Euro-WTG-5

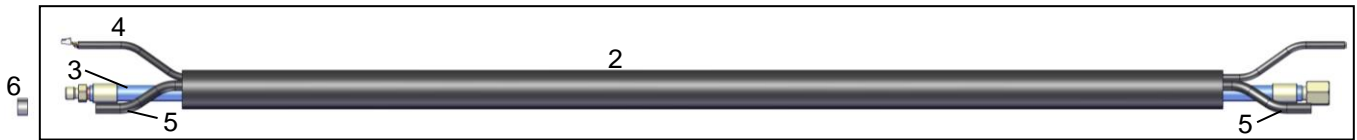


Spare Part List

Pos.	Part No.	Description	Pos.	Part No.	Description
15	2411201	Kink protection	20	0040601	Screw M4x6 (PU=20)
16	2411609	Nut for gun plug housing	21	2151700	Plug nut
17	2411600S1	Gun plug housing, without Nut	22	21515031	Central connector GZ0
18	6051602	Cap for gun plug housing	23	3000211	Central connector WTG-5
19	6051603	Cap with hole for gun plug housing			

Cable hose package e.ARc 20W-F

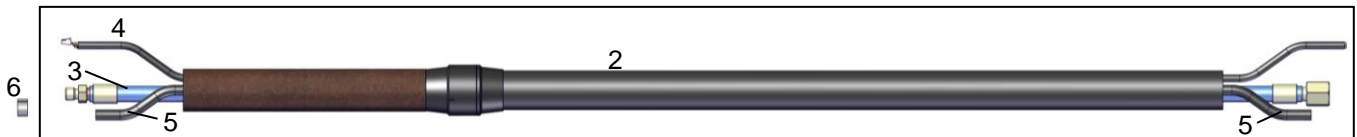
Cable hose package standard



Spare Part List

Pos.	Part No.	Description	Pos.	Part No.	Description
1	201T04002	Cable hose package standard 4m cpl.	4	0510614-046	Control cable 6 pol., one side with flat connector, l=4,6m
	201T08002	Cable hose package standard 8m cpl.		0510614-086	Control cable 6 pol., one side with flat connector, l=8,6m
2	92572124	Rubber outer cover 21x1,5 (PU=60m)	5	0550121	PVC-hose (PU=200m)
3	201T41041	Power cable 4m cpl.	6	03210801	Single ear clamp D=8,0 (PU=100)
	201T41081	Power cable 8m cpl.			

Cable hose package with leather

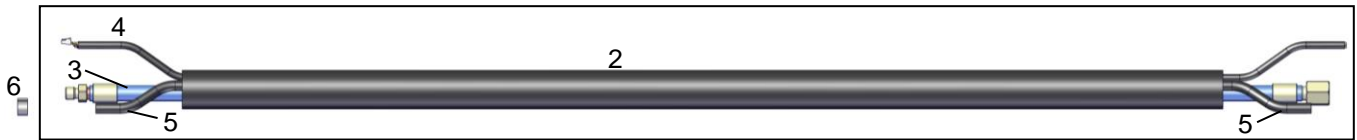


Spare Part List

Pos.	Part No.	Description	Pos.	Part No.	Description
1	201T04002L	Cable hose package with leather (1m), 4m cpl.	3	201T41041	Power cable 4m cpl.
	201T08002L	Cable hose package with leather (1m), 8m cpl.		201T41081	Power cable 8m cpl.
2	92572124	Rubber outer cover 21x1,25 (PU=60m)	4	0510614-046	Control cable 6 pol., one side with flat connector, l=4,6m
2.1	1172651	Leather/rubber connector		0510614-086	Control cable 6 pol., one side with flat connector, l=8,6m
2.2	ARLS-23100	Leather l=1m	5	0550121	PVC-hose (PU=200m)
			6	03210801	Single ear clamp D=8,0 (PU=100)

Cable hose package e.ARC 18W-F

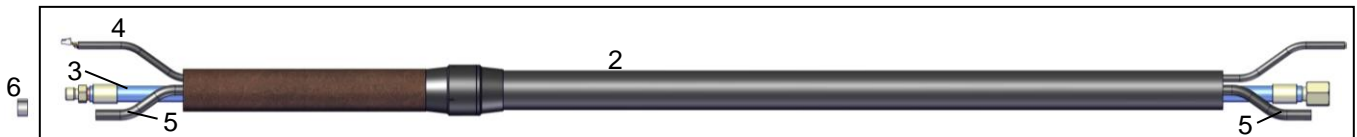
Cable hose package standard



Spare Part List

Pos.	Part No.	Description	Pos.	Part No.	Description
1	181T04002	Cable hose package standard 4m cpl.	4	0510614-046	Control cable 6 pol., one side with flat connector, l=4,6m
	181T08002	Cable hose package standard 8m cpl.		0510614-086	Control cable 6 pol., one side with flat connector, l=8,6m
2	92572124	Rubber outer cover 21x1,5 (PU=60m)	5	0550121	PVC-hose (PU=200m)
3	181T41041	Power cable 4m cpl.	6	03210801	Single ear clamp D=8,0 (PU=100)
	181T41081	Power cable 8m cpl.			

Cable hose package with leather

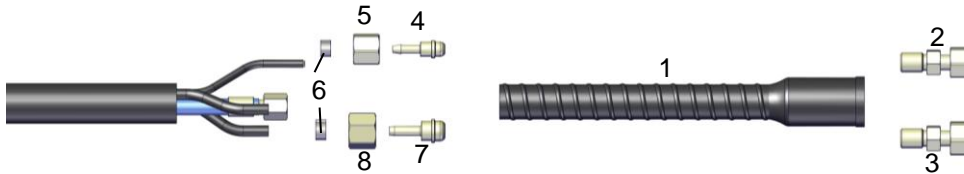


Spare Part List

Pos.	Part No.	Description	Pos.	Part No.	Description
1	181T04002L	Cable hose package with leather (1m), 4m cpl.	3	181T41041	Power cable 4m cpl.
	181T08002L	Cable hose package with leather (1m), 8m cpl.		181T41081	Power cable 8m cpl.
2	92572124	Rubber outer cover 21x1,25 (PU=60m)	4	0510614-046	Control cable 6 pol., one side with flat connector, l=4,6m
2.1	1172651	Leather/rubber connector		0510614-086	Control cable 6 pol., one side with flat connector, l=8,6m
2.2	ARLS-23100	Leather l=1m	5	0550121	PVC-hose (PU=200m)
			6	03210801	Single ear clamp D=8,0 (PU=100)

Torch connections for power sources e.Arc 20W-F/18W-F

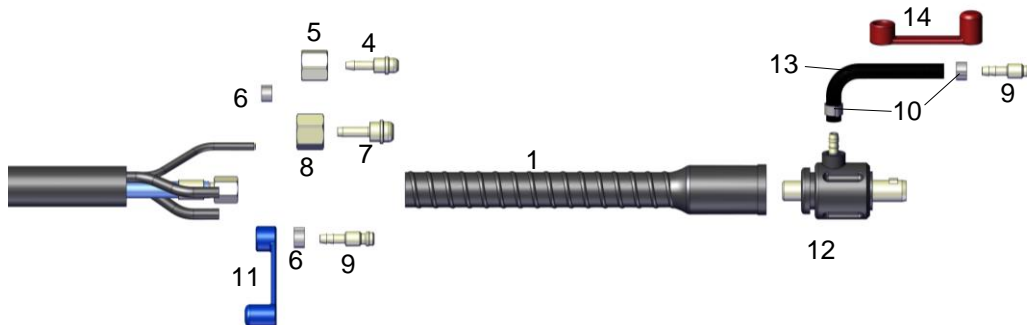
Single connection M12x1 / G1/4" / G3/8"; gas: 1/4", water: G3/8"



Spare Part List

Pos.	Part No.	Description	Pos.	Part No.	Description
1	0331025	Kink protection	5	0313001	Nut G1/4"
2	0331016	Adaptor M12x1 AG – G1/4" IG	6	03210871	Single ear clamp D=8,7 (PU=100)
3	0331017	Adaptor M12x1 AG – G3/8" IG	7	0312004	Connector G3/8"
4	0311004	Connector G1/4"	8	0313002	Nut G3/8"

BSB 35/50 (Ø13mm) with gas: G1/4" / G3/8", water: hose nipple NW5

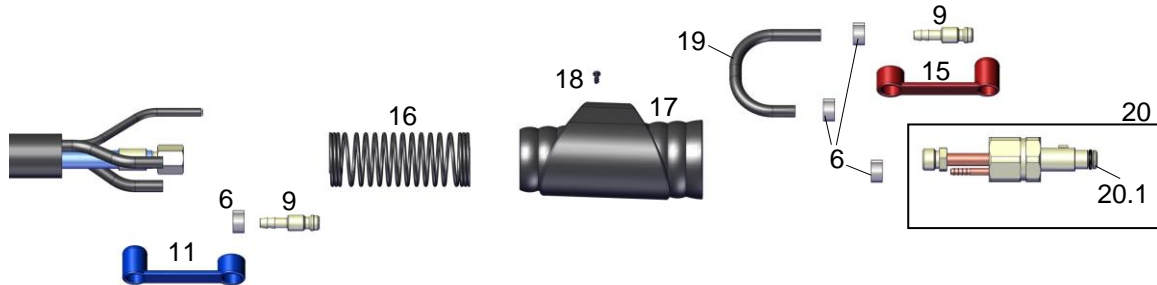


Spare Part List

Pos.	Part No.	Description	Pos.	Part No.	Description
1	0331025	Kink protection	9	2990800	Water hose nipple NW5 (PU=10)
4	0311004	Connector G1/4"	10	03211001	Single ear clamp D=10,0 (PU=100)
5	0313001	Nut G1/4"	11	45050339	Water stop blue (PU=10)
6	03210871	Single ear clamp D=8,7 (PU=100)	12	3595110S1	BSB-Connector SK35/50 (Ø13mm)
7	0312004	Connector G3/8"	13	45573158	Hose 5x2 black (PU=100m)
8	0313002	Nut G3/8"	14	45050340	Water stop red (PU=10)

Torch connections for power sources e.Arc 20W-F/18W-F

Compact connection TIG Gas central, water: hose nipple NW5



Spare Part List

Pos.	Part No.	Description	Pos.	Part No.	Description
6	03210871	Single ear clamp D=8,7 (PU=100)	17	30002273	Housing for compact connection TIG gas central
9	2990800	Water hose nipple NW5 (PU=10)	18	300022735	Screw Torx (PU=20)
11	45050339	Water stop blue (PU=10)	19	0550121	Hose 4x1,3mm black (PU=100m)
15	45050340	Water stop red (PU=10)	20	300022714	Compact connector TIG gas central
16	300022731	Spring for housing	20.1	0072000	O-Ring 7x2mm (PU=20)

Euro-WZ0 - Euro-WTW-5 with water: hose nipple NW5



Spare Part List

Pos.	Part No.	Description	Pos.	Part No.	Description
6	03210871	Single ear clamp D=8,7 (PU=100)	23	2411600S1	Gun plug housing, without nut
9	2990800	Water hose nipple NW5 (PU=10)	24	6051610	Rubber kink protection 3-T (PU=2)
11	45050339	Water stop blue (PU=10)	25	0040601	Screw M4x6 (PU=20)
15	45050340	Water stop red (PU=10)	26	2151700	Plug nut
21	2411201	Kink protection	27	3000306S	Central connector WZ0
22	2411609	Nut for gun plug housing	28	3000212S	Central connector WTW-5



Tungsten electrodes



<u>Markings</u>	<u>Part.No.</u>	<u>Ø [mm]</u>	<u>Length [mm]</u>	<u>Recommendation</u>
Green „WP“	08602110	1,0	175	Current type: Alternating current Ignitability: - Lifetime: + Arc stability: + Type of material: Aluminium, aluminium alloys
	08602170	1,6		
	08602240	2,4		
	08602320	3,2		
	08602400	4,0		
	08602480	4,8		
Gray „WC 20“	0458000S1	1,0	175	Current type: Direct current minus pole, Alternating current Ignitability: ++ Lifetime: + Arc stability: + Type of material: For all applications
	0458000	1,6		
	0458001	2,4		
	0458002	3,2		
	0458003	4,0		
	0458004	4,8		
Black „WL 10“	0464001	1,0	175	Current type: Direct current minus pole Ignitability: + Lifetime: + Arc stability: + Type of material: High-alloyed steels
	0464002	1,6		
	0464004	2,4		
	0464006	3,2		
	0464007	4,0		
	0464008	4,8		
Gold „WL 15“	0446902	1,0	175	Current type: Direct current minus pole Ignitability: ++ Lifetime: ++ Arc stability: + Type of material: High-alloyed steels
	0446903	1,6		
	0446904	2,4		
	0446905	3,2		
	0446906	4,0		
	0446907	4,8		
Blue „WL 20“	0461001	1,0	175	Current type: Direct current minus pole Ignitability: +++ Lifetime: +++ Arc stability: ++ Type of material: High-alloyed steels
	0461002	1,6		
	0461003	2,4		
	0461004	3,2		
	0461005	4,0		
	0461007	4,8		
White „WZ8“	0445928	1,0	175	Current type: Alternating current Ignitability: + Lifetime: ++ Arc stability: ++ Type of material: Aluminium, aluminium alloys
	0445929	1,6		
	0445930	2,4		
	0445931	3,2		
	0445932	4,0		
	0445933	4,8		
Turquoise „WS2“	0459000S	1,0	175	Current type: Direct current minus pole, Alternating current Ignitability: +++ Lifetime: +++ Arc stability: ++ Type of material: For all applications
	0459000	1,6		
	0459002	2,4		
	0459003	3,2		
	0459004	4,0		
	0459005	4,8		