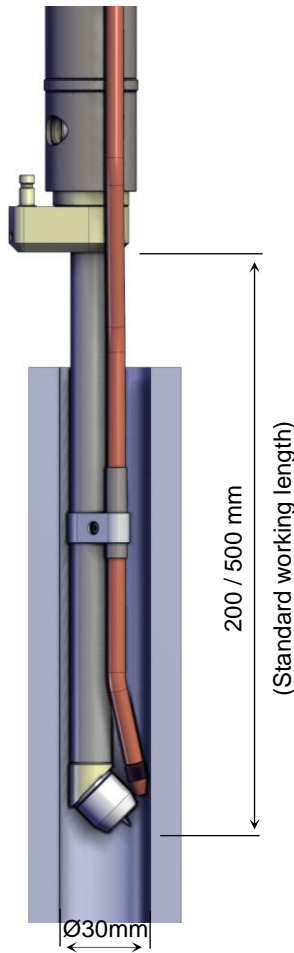




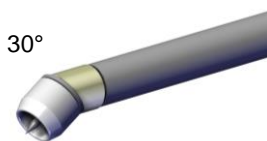
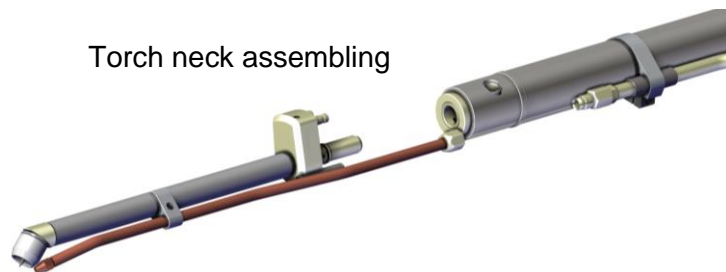
Information overview: Cladding Torch CLW 250 – Ø30mm



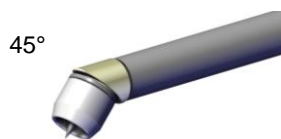
Special features:

- *Efficient torch system (CLW 250: 250A)*
- *100% Duty Cycle*
- *Water cooling system up to torch head*
- *Torch head 30°, 45° and 90°*
- *Quick change torch neck*
- *Ready for hot wire*
- *Upgradable to CLW 305 (300A)*
- *Upgradable to CLW 205 (200A)*

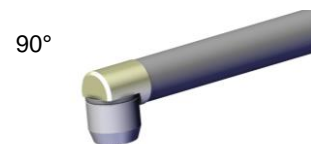
Torch neck assembling



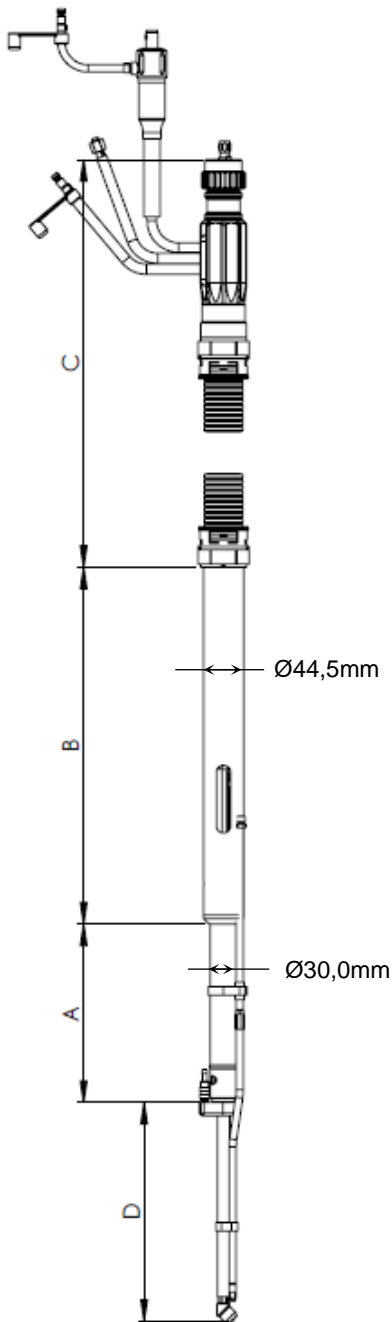
30°



45°



90°



Technical Data CLW 250:

Work piece-inside-Ø 250	30mm min (1 ¼ inch)
Welding current	max. 250A (100% ED)
Wire-Ø	0,8 / 1,0mm
Electrode-Ø	1,6 / 2,4mm
Flow rate cooling water	min. 2l/min
A	200mm
B	400mm
C	On request
D	200 / 500mm
	(Other lengths available on request)

- Cable assembly connections according to customer specifications
- Optionally available as hot or cold wire